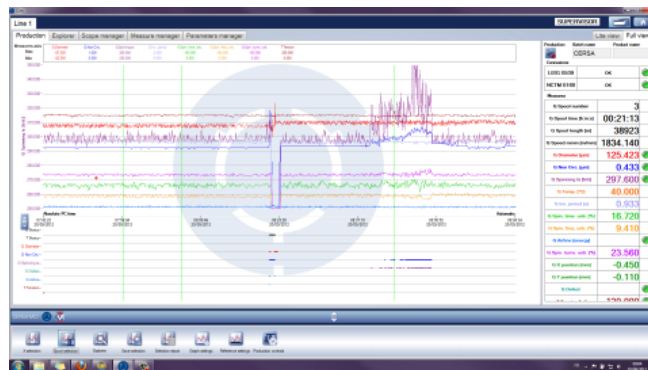


SPECIFICATIONS

CIM PROD software

C.I.M software (CERSA Instruments Manager) is a PC environment to manage all CERSA-MCI instruments. It provides a complete set of tools to improve and master the production process.

All tools included in CIM software help the process engineer and operators to master the relations of causes and effects between all the measured parameters. It is a global solution for supervision, data logging and **quality reports**.



Specifications are subject to change without notice

PRODUCT	CIM freeware	CIM PROD licence
Main features		
Continuous graphical displaying of measurements and defects vs time or length	10 min (limited)	✓
Data logging by batch or spool production files	10 min (limited)	✓
Statistical and defects reports	10 min (limited)	✓
Defects characterization (positioning, dating, extremum values, images...)	✓	✓
Real time scopes and analysis	✓	✓
Instrument maintenance and configuration	✓	✓
Full intelligent factory management		
Product recipes configuration	-	✓
Automatic (by database) or manual production orders	-	✓
Automatic start and stop data logging by reset spool or speed triggering	-	✓
Export full data to customer database (ODBC)	-	Additional licence
Analog to digital converter. Acquisition of external signals	-	Additional licence
Tools		
Custom remote displaying	10 min (limited)	✓
Load previous production files for display and analysis	✓	✓
Print production reports	-	✓
Export to CSV toolbox	-	✓
Others features		
Level permission restriction by user level	✓	✓
Metric and imperial unit displaying	✓	✓
Save display settings and line configuration in preset	✓	✓

PC requirements :

- Windows 7 / Windows 8 / Windows 10 has been validated.
- Minimum requirement: 8 GB RAM - Intel i5 processor 2GHz - 250 Gb hard disc with high speed access
- Graphical card compliant with DirectX 9 and WDDM 1.0 min. (Windows Display Driver Model).
- Minimum requirement: 1280x1024 screen resolution. (Lower resolutions will reduce the ergonomics).
- Maximum requirement: 1920x1080 screen resolution. (Higher resolutions will reduce the ergonomics).
- 1 RS232 serial link port for each connected instrument.

Remarks :

- If your computer doesn't have RS232 port, you can use additional internal boards (USB to RS232 converters are not recommended).
- CIM interface, production part, is compatible with touch screen displays.
- CIM is compiled for 32-bits target. x64 processors can manage this kind of applications.
- If you use data logging, you must configure network and user permissions of path containing central databases.
- CIM software cannot be installed under Windows XP.